

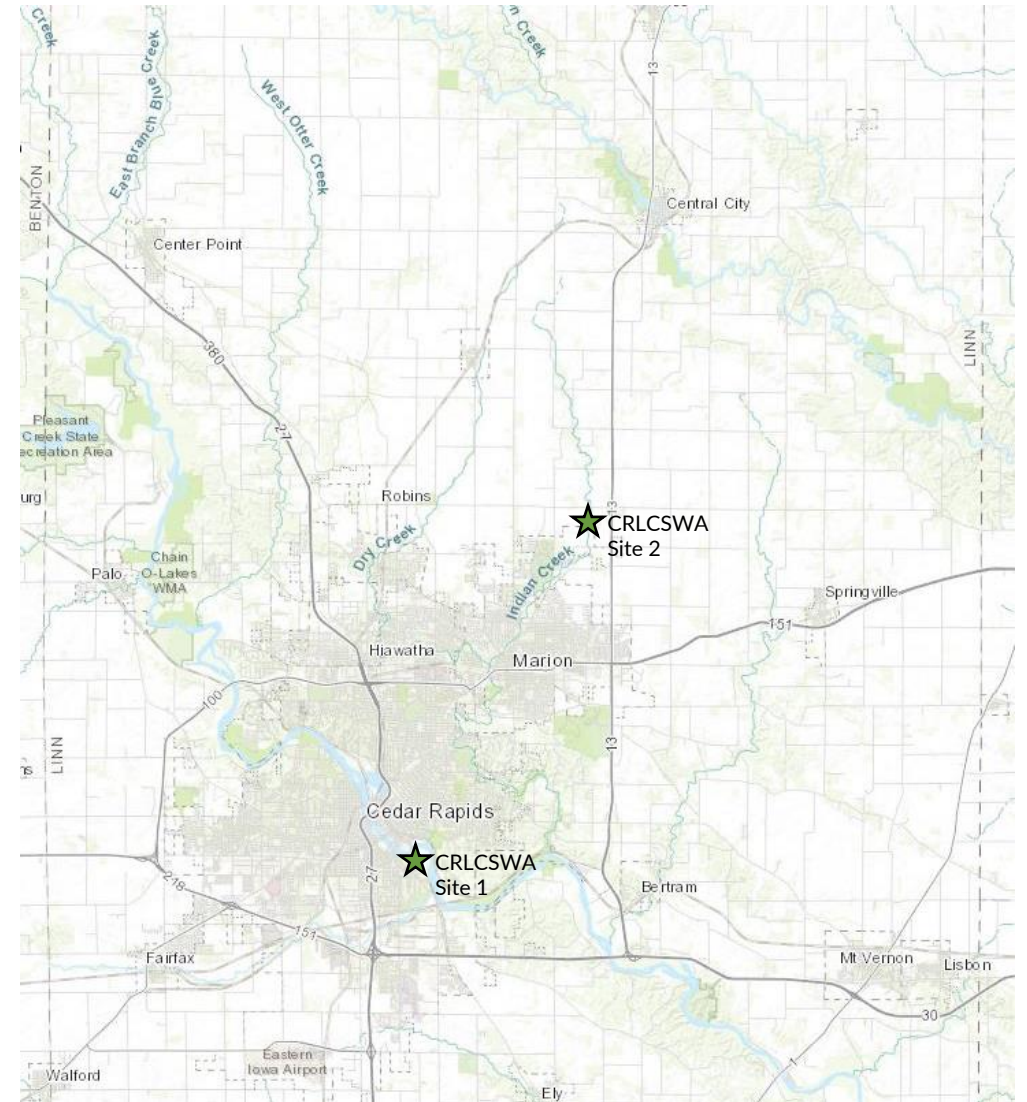
# Cedar Rapids Linn County Solid Waste Agency

Preliminary Location Assessment



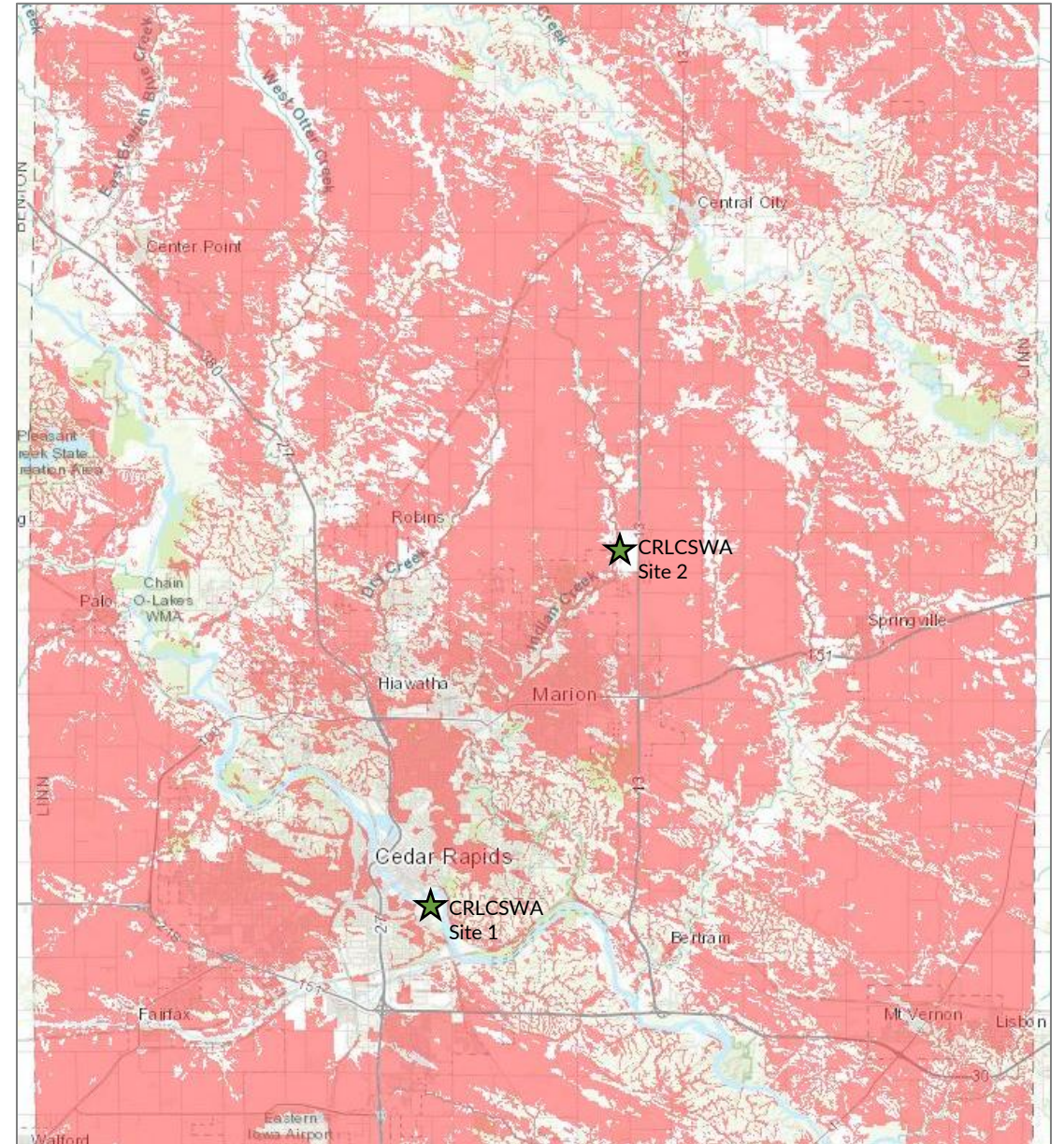
# Location Assessment

- Funneling tool
- Waste campuses without landfill may only be subject to local zoning
- Assessment based on Iowa Administrative Code 567.113 (landfill siting)
  - 1 mile from community water sources
  - 500 feet from residences
  - 1000 feet from private water wells
  - Outside airport's impact zone
- Linn County
  - CSR<65



# Impact of Criteria

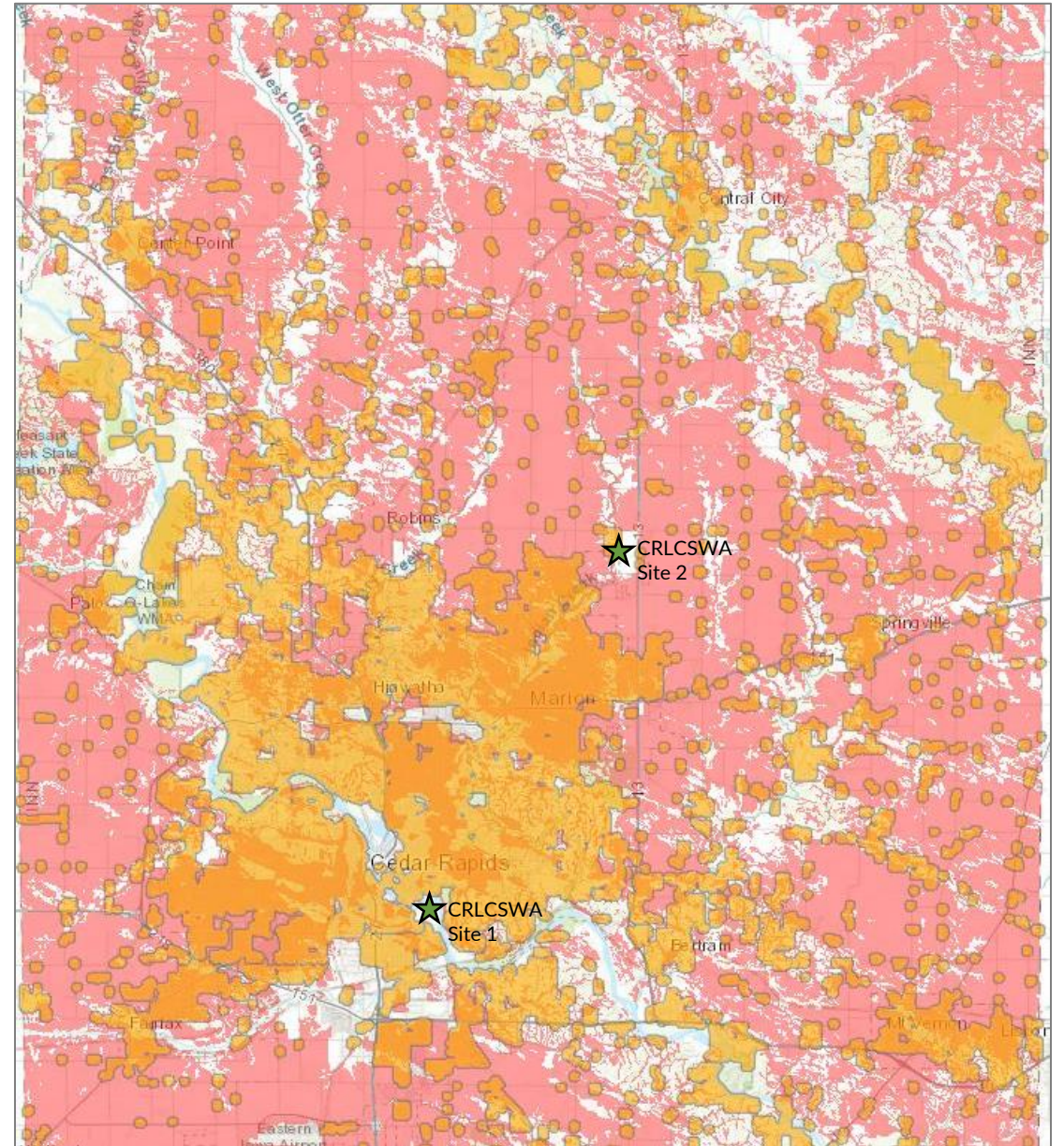
- Layer of Corn Suitability Rating (CSR) > 65
- Specific to Linn County
- Most limiting of siting criteria





# Impact of Criteria

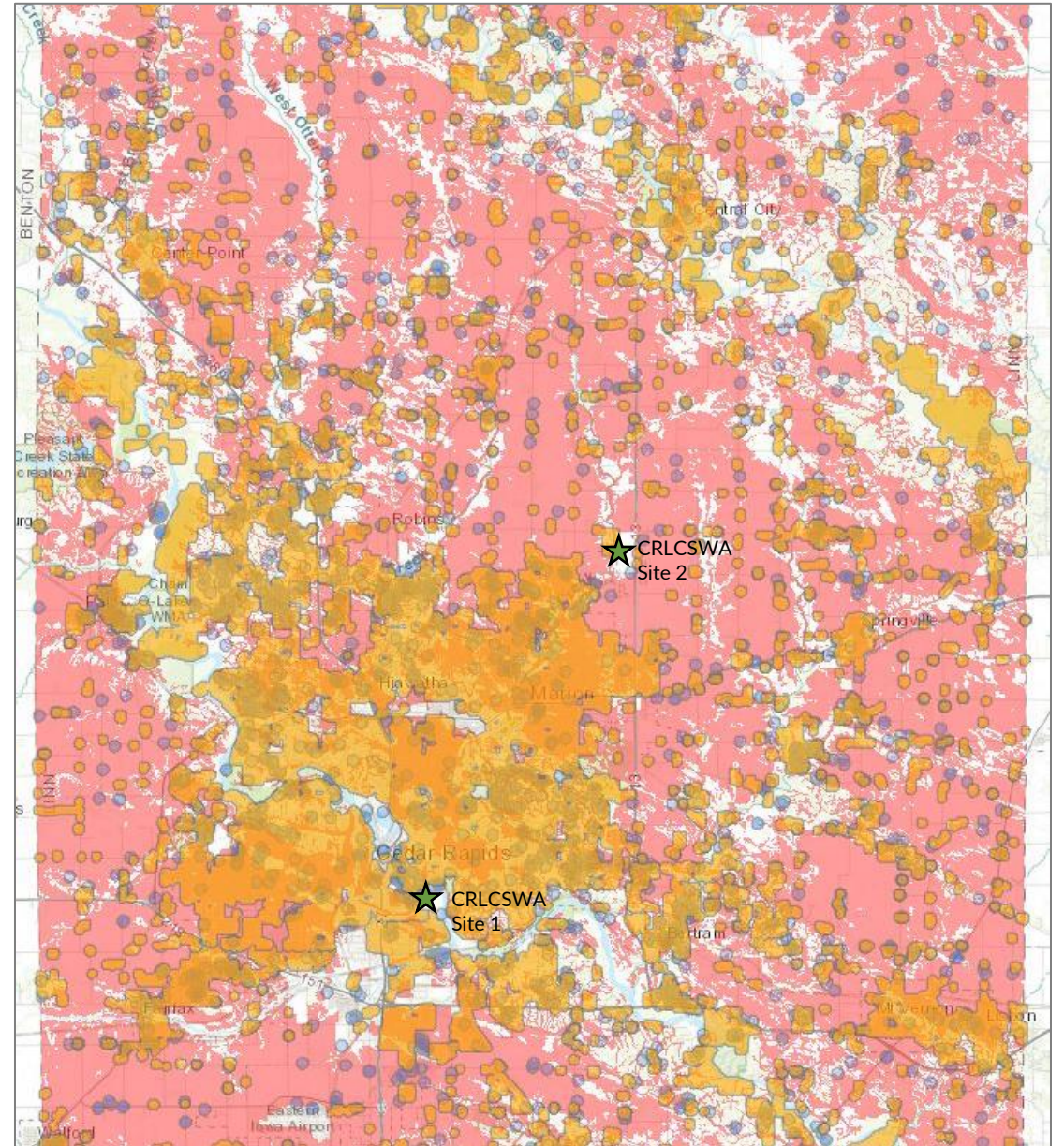
- Layer of 500-foot radius from occupied residences
- Iowa Administrative Code requirement
- Second most limiting of siting criteria





# Impact of Criteria

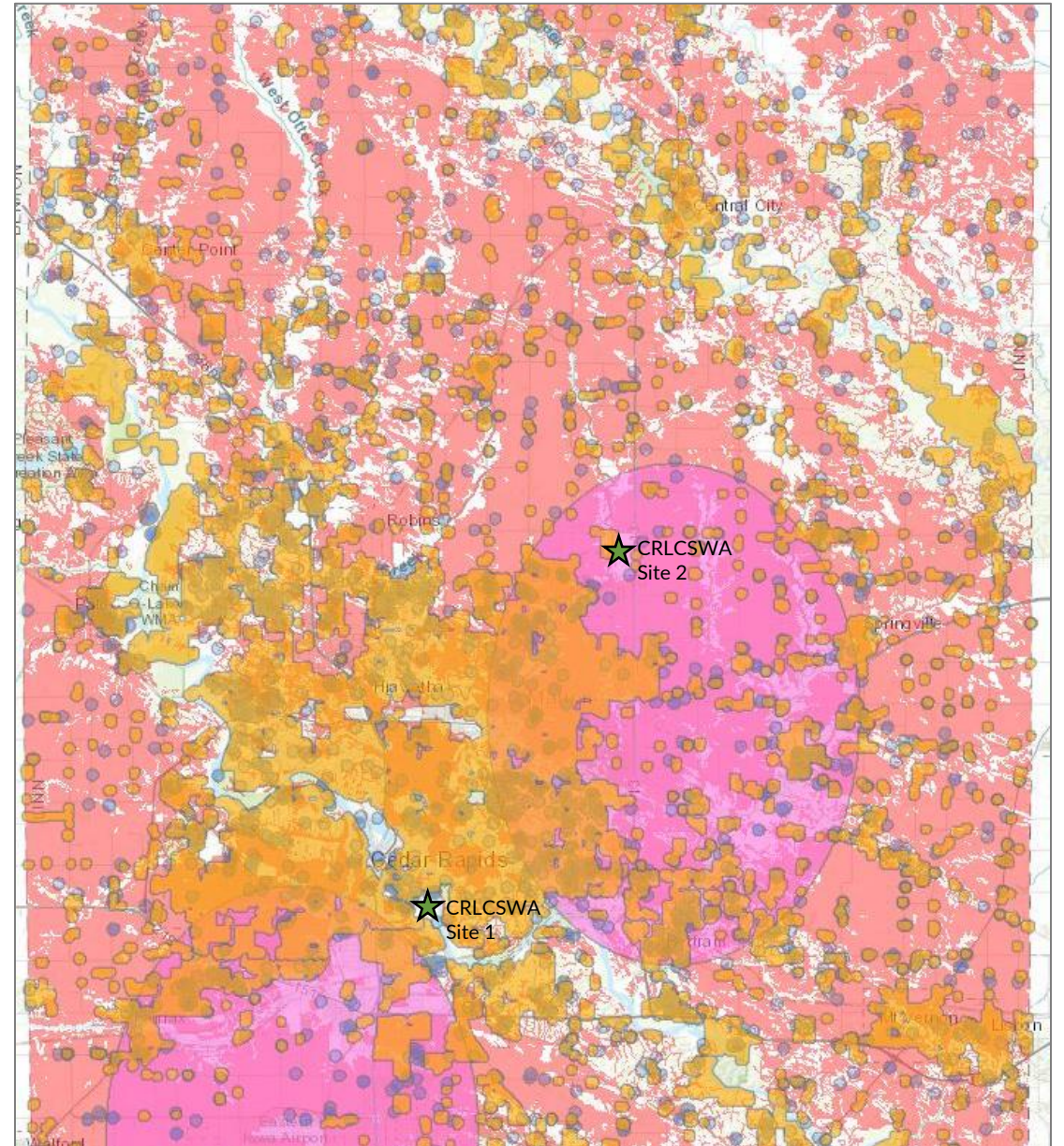
- Layer of 1000-foot radius from private water wells
- Iowa Administrative Code requirement





# Impact of Criteria

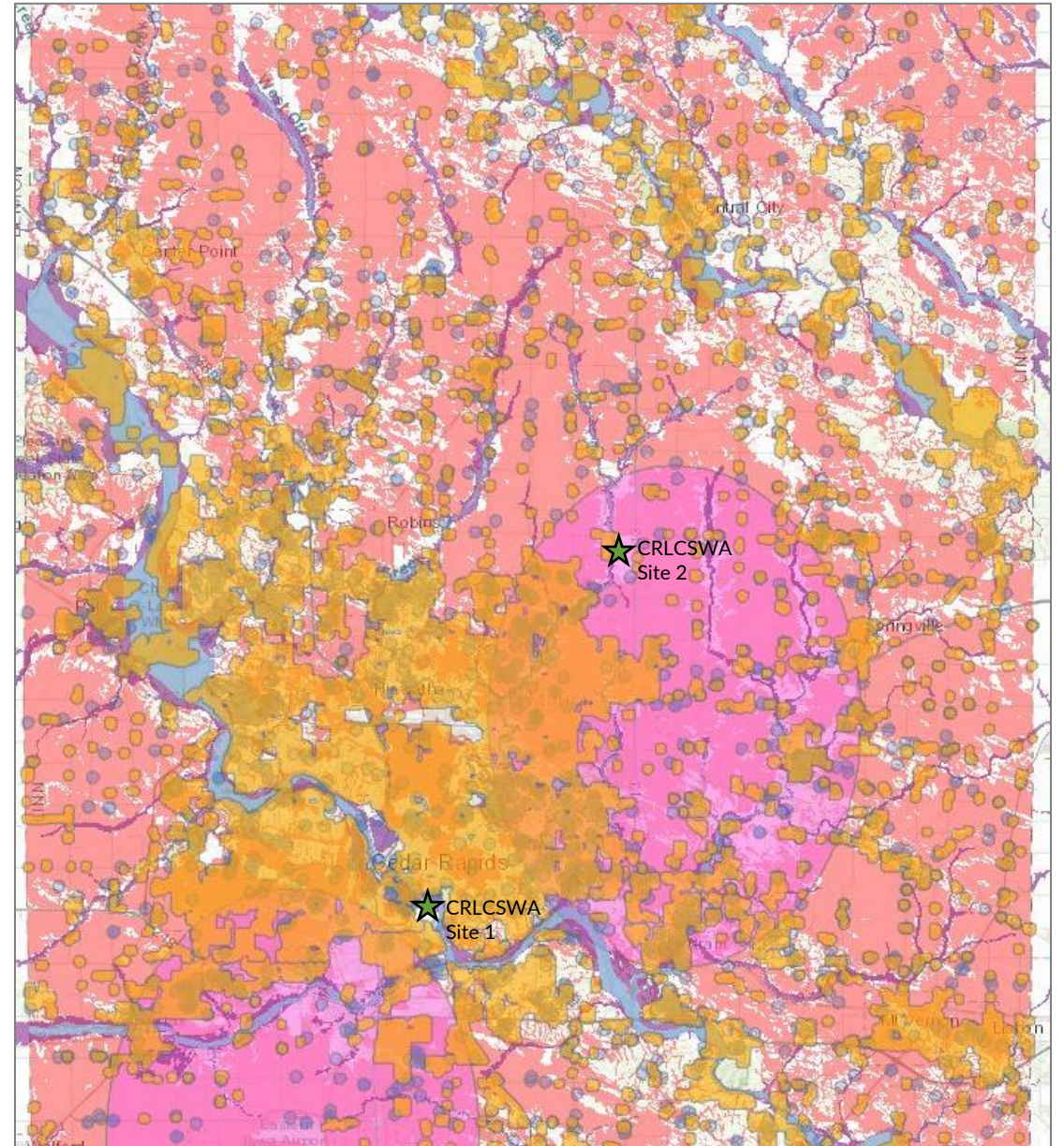
- Outside of Airport's Impact Zone
- 6-mile radius
- Iowa Administrative Code requirement





# Impact of Criteria

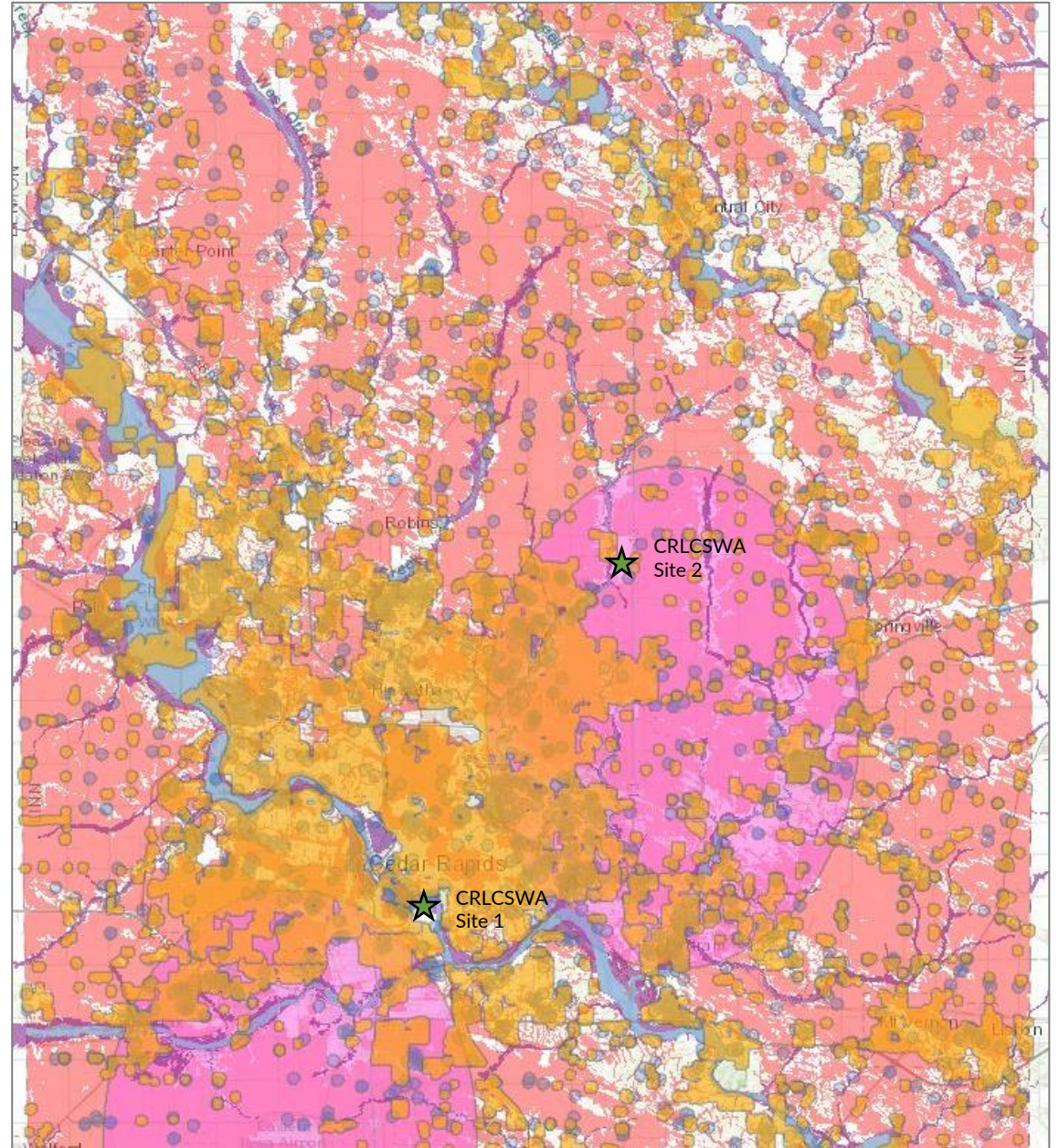
- Iowa Administrative Code limitation for development within 100-year floodplain
- Demonstrations and mitigation measures can be put in place to permit development





# Assessment Summary

- Limited land in Linn county that meets landfill criteria
- No parcels = 320 acres = no landfill in Linn County
- Regional Landfill Partnership with waste campus, transfer station(s) and/or alternative technology facility





Thank you for attending!

[www.solidwasteagency.org](http://www.solidwasteagency.org)

WASTE PLANNING

2044