

Cedar Rapids Linn County Solid Waste Agency

Joe Horaney, Communications Director



CRLCSWA

- Formed in 1994 via a 28E Agreement between the City of Cedar Rapids and Linn County
- Governed by a nine-member Board of Directors



Site 1 – Mount Trashmore

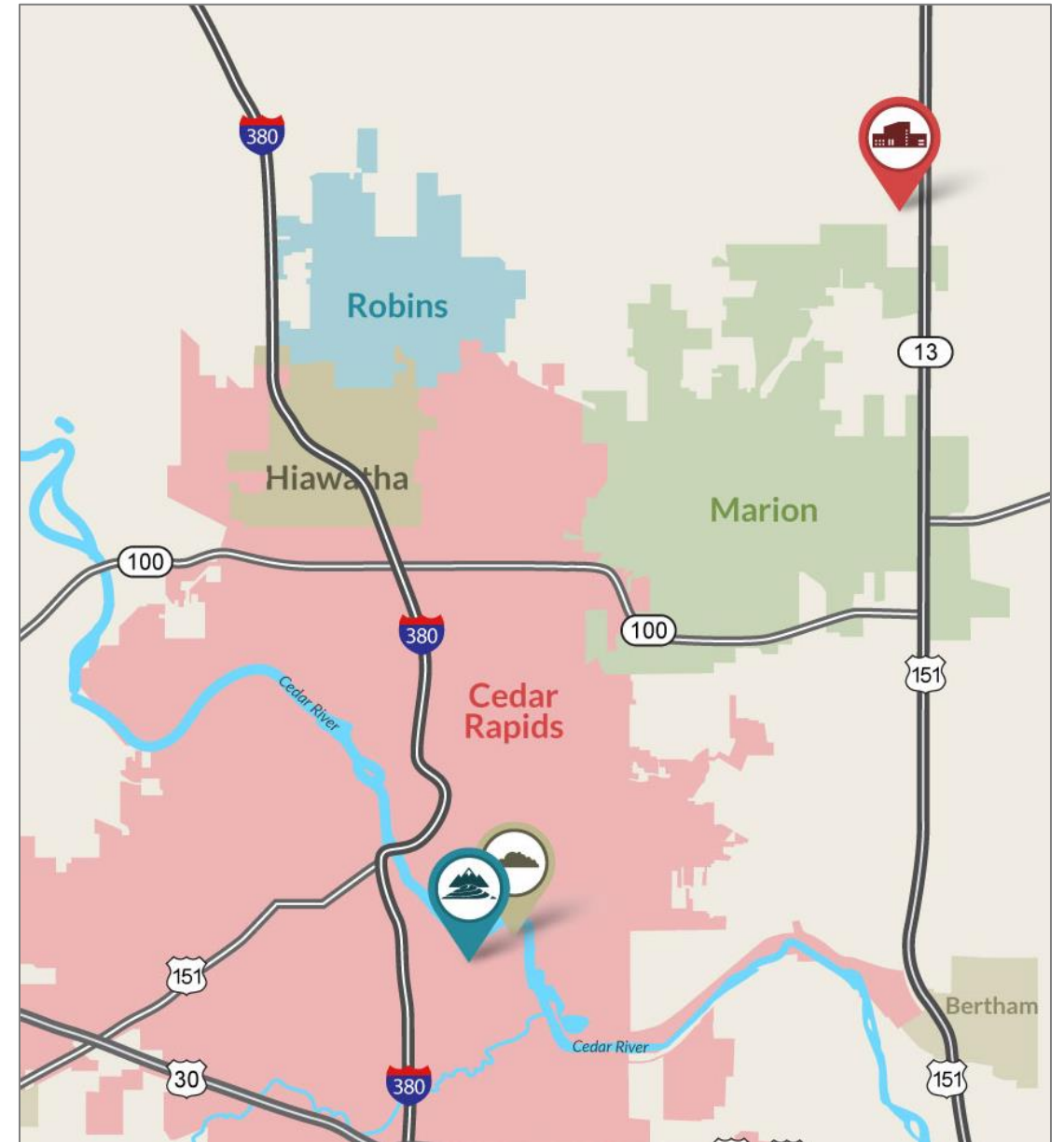


Site 2 – Resource Recovery & Landfill



Site 3 – Compost Facility

- Main programs



Forward

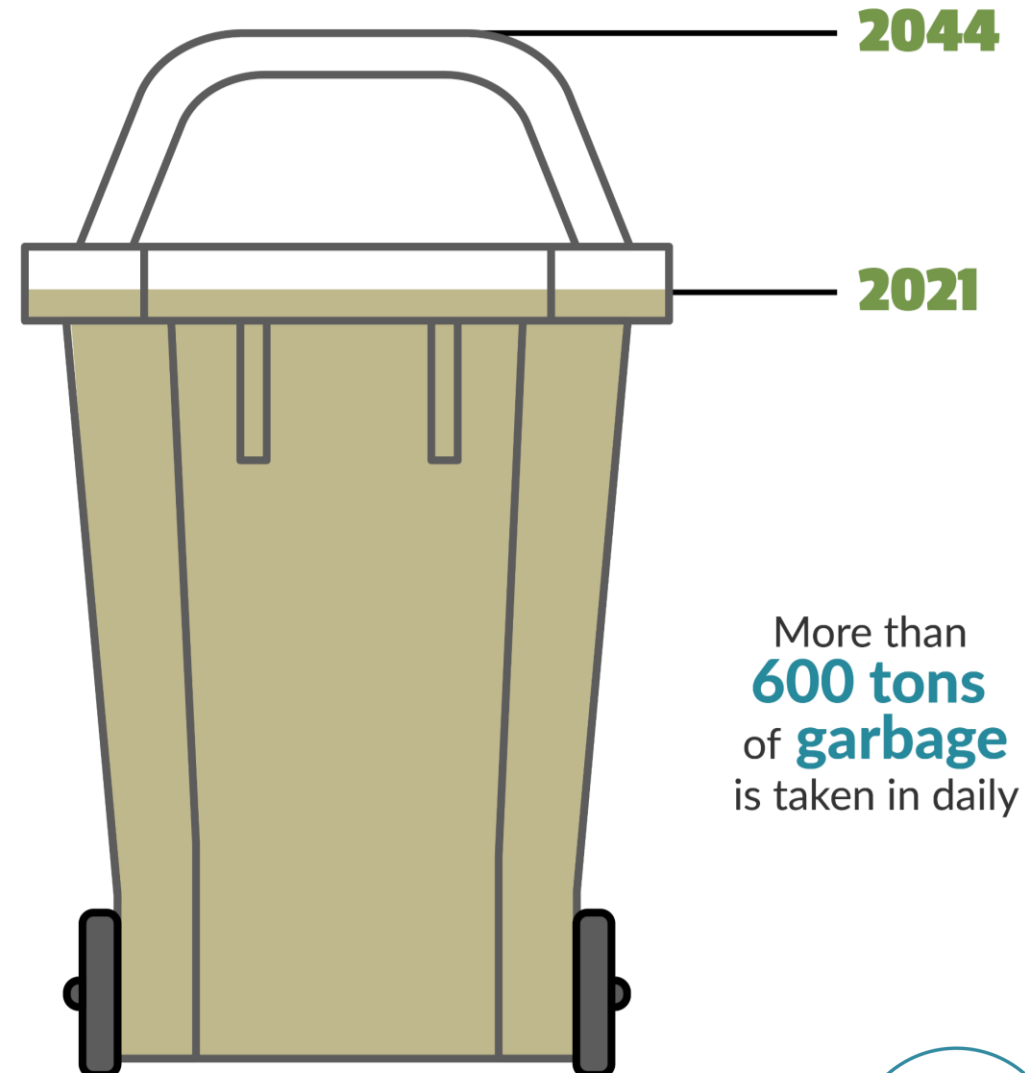
WASTE PLANNING

2044



Forward 2044 Waste Planning

Agency's original
charge ends
June 30, 2044



Current vs. Projected Handling Volumes

Agency Material Handling Volumes (in Tons). Note that FY2030 and beyond are projections.

	FY2017	FY2018	FY2019	FY2020	FY2030*	FY2040*	FY2050*
Linn County Population	224,380	225,770	226,700	228,600	254,900	276,800	298,900
Materials Landfilled	183,961	181,014	202,303	211,749	221,763	240,816	260,043
Materials Recycled/Recovered	49,689	42,852	42,006	42,458	49,529	53,785	58,079
Total Materials	233,650	223,866	244,309	254,207	271,292	294,601	318,122

Source: Summary of Waste Volumes and Projections Memorandum, solidwasteagency.org



What Does This Mean?

- This planning process is an opportunity to set our community up for a successful, sustainable, and safe future for our solid waste management needs.
- CLCRSWA is evaluating solutions on several criteria:



Timeline



Infrastructure cost



Proven success



Convenience and
accessibility



Ability to process projected
waste stream volumes

Forward

WASTE PLANNING

2044

Process

- Identify alternatives, including best practices and emerging technologies
- Progressive but realistic review by Agency and Board
- Stakeholder meetings
- Public information meetings
- Board of Directors has final authority
- Recommended path forward and report

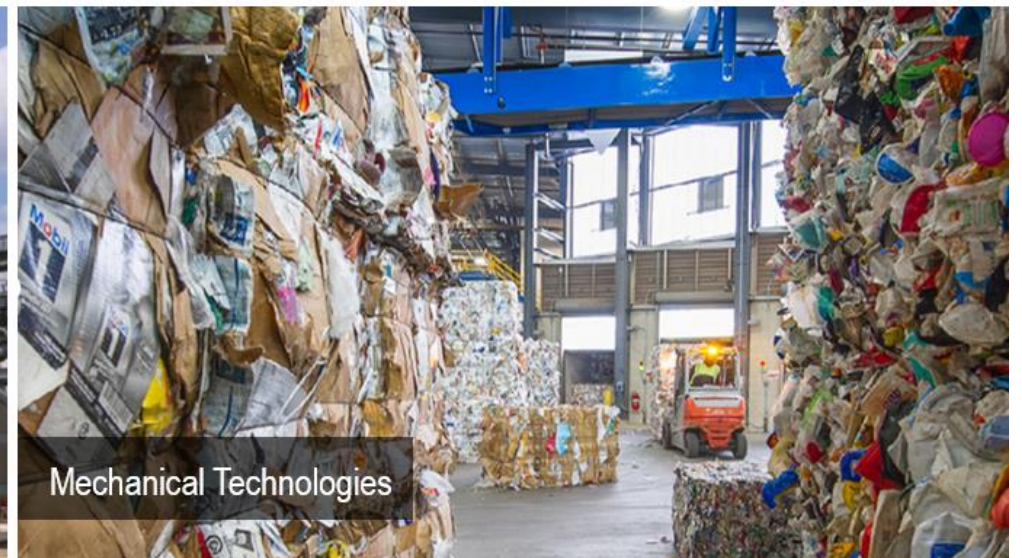
Considering the Options

Forward

WASTE PLANNING

2044

Alternative Technologies



Expanded Waste Diversion

- Waste diversion is the top priority: reducing at the source
- Reduces the amount of solid waste going into landfill
- Existing diversion programs: Recycling, compost, HHM
- Requires items to be separated from the collection point
 - Consumers play an important role



Waste to Energy



Convert solid waste into energy



Combustion and turbines



Bacteria to break down organic matter (anaerobic digestion)

Landfilling

- In the Midwest, landfilling is largely found to be an economically favorable waste management practice.
- Landfilling will continue to play a role in the process: residues, by-products or waste remaining
- A new landfill could be sited
- Many factors are considered when siting a facility



Site 2: Rendering of permitted site development

Waste Transfer Stations

- A point between a community's solid waste collection program and a final disposal facility
- After collection, the waste is compressed and grouped together for economical transport

What Does This Mean For Your Community?

Forward

WASTE PLANNING

2044

Serving Our Community

- **We are here** – still open, serving Linn County
- Public and Stakeholder Meetings – We value your input!
- Visibility of the process
- Meeting community needs with a sustainable focus
- Continued service beyond 2044





How to Reach Out

Joe Horaney, Communications Director

jhoraney@solidwasteagency.org

www.solidwasteagency.org

Forward 2044

Waste & Recycling Planning for Linn County's Future

Planning for the Future

The Cedar Rapids Linn County Solid Waste Agency was created in 1994 via a 28E agreement between the City of Cedar Rapids and Linn County with a charge to provide Linn County with integrated solid waste management options. **The Agency's original charge will end on June 30, 2044. This is the last day garbage can be accepted at 1954 County Home Road, Marion, where the landfill and Resource Recovery building are located.**

Just because the landfill will close does not mean garbage will stop. The Solid Waste Agency takes in more than 600 tons of garbage daily. Linn County's waste will still need to be handled. In fact, the landfill on County Home Road is projected to be full in 2038 due to factors including increased debris after disasters such as the 2020 derecho. To best serve the future of our region, the Solid Waste Agency is evaluating integrated solid waste management solutions. These solutions will be analyzed on several criteria, including timeline to plan, permit, construct and startup; associated infrastructure costs; proven commercial operation success; convenience and accessibility for citizens, customers, businesses and waste haulers; and ability to process projected waste stream volumes.

Alternative technologies and best practices within the U.S. municipal solid waste industry will be considered when evaluating potential solutions. Recommended programs and facilities will pass through a progressive but realistic review by the agency and its board of directors. Once best practices, emerging technologies and public input have been considered, the recommended solutions will be presented to the board of directors, who has final authority on the decision.

Considering the Options

This planning process is an opportunity to set our community up for a successful, sustainable, and safe future for our solid waste management needs. The Agency is considering several possibilities for beyond 2044 including multiple solutions for a variety of waste streams.